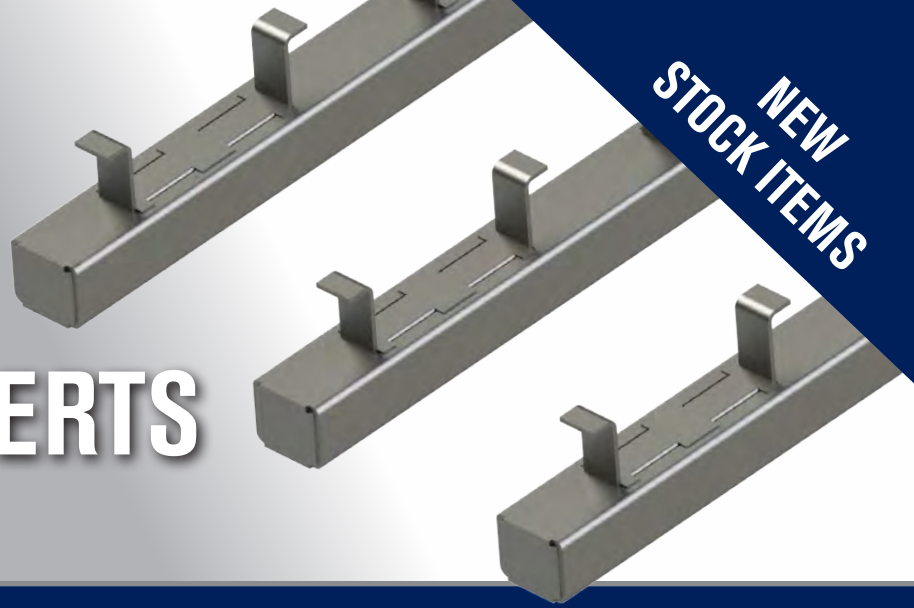


UNISTRUT® CONCRETE INSERTS

P3200 & P3300 SERIES

NEW
STOCK ITEMS



UNISTRUT®

A PART OF **atkore**
INTERNATIONAL

Unistrut Concrete Inserts provide an extremely strong connection point. Continuous slots allow for infinite configurations. 8', 12' and 20' Concrete Inserts are now stocked at our Chicago location, providing immediate availability to sudden customer needs. Order today!

CONCRETE INSERTS - P3200 & P3300 SERIES

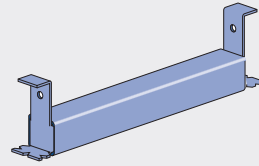
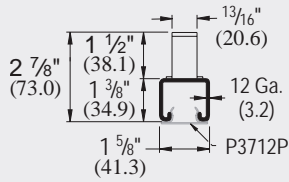


FEATURES AND BENEFITS

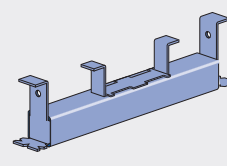
- Lengths available from 3" to 20'
- Interfaces with standard Unistrut Framing System
- High Capacity
- Easy installation
- Available Finishes:
 - Pre-Galvanized (PG)
 - Hot-Dipped Galvanized (HG)
 - Plain (PL)
 - Stainless Steel (SS)

AVAILABLE P3200 & P3300 LENGTHS

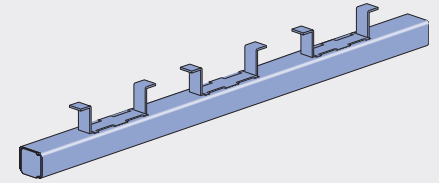
P3200



P3249 thru P3252

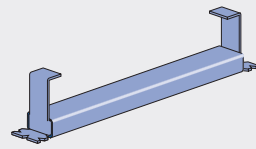
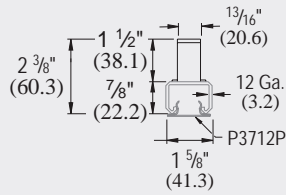


P3253

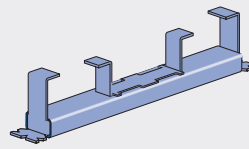


P3254 thru P3270

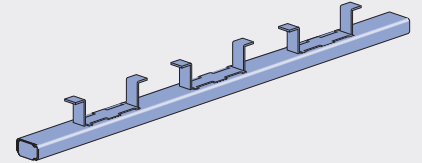
P3300



P3349 thru P3351



P3352 thru P3353



P3354 thru P3370

Part Number	Insert Length (in or ft)	Max. Allowable Spacing of Pt. Loads (in)	Min. Spacing of Pt. Loads (in)	Max. Allowable Uniform Load (lbs)	Part Number	Insert Length (in or ft)	Max. Allowable Spacing of Pt. Loads (in)	Min. Spacing of Pt. Loads (in)	Max. Allowable Uniform Load (lbs)		
P3249	3"	500	—	500	P3349	3"	400	—	400		
P3250	4"	800	—	800	P3350	4"	500	—	500		
P3251	6"	1,000	—	1,000	P3351	6"	750	—	750		
P3252	8"	1,200	—	1,200	P3352	8"	1,000	—	1,000		
P3253	12"	2,000	—	2,000	P3353	12"	1,500	—	1,500		
P3254	16"	2,000	12	4,000	P3354	16"	1,500	12	3,000		
P3255	20"	2,000	12	4,000	P3355	20"	1,500	12	3,000		
P3256	24"	2,000	12	4,000	P3356	24"	1,500	12	3,000		
P3257	32"	2,000	12	2,000	Lbs./Ft.	P3357	32"	1,500	12	1,500	Lbs./Ft.
P3257A	36"	2,000	12	2,000	Lbs./Ft.	P3357A	36"	1,500	12	1,500	Lbs./Ft.
P3258	40"	2,000	12	2,000	Lbs./Ft.	P3358	40"	1,500	12	1,500	Lbs./Ft.
P3259	4'	2,000	12	2,000	Lbs./Ft.	P3359	4'	1,500	12	1,500	Lbs./Ft.
P3260	5'	2,000	12	2,000	Lbs./Ft.	P3360	5'	1,500	12	1,500	Lbs./Ft.
P3261	6'	2,000	12	2,000	Lbs./Ft.	P3361	6'	1,500	12	1,500	Lbs./Ft.
P3262	7'	2,000	12	2,000	Lbs./Ft.	P3362	7'	1,500	12	1,500	Lbs./Ft.
P3263	8'	2,000	12	2,000	Lbs./Ft.	P3363	8'	1,500	12	1,500	Lbs./Ft.
P3264	9'	2,000	12	2,000	Lbs./Ft.	P3364	9'	1,500	12	1,500	Lbs./Ft.
P3265	10'	2,000	12	2,000	Lbs./Ft.	P3365	10'	1,500	12	1,500	Lbs./Ft.
P3266	12'	2,000	12	2,000	Lbs./Ft.	P3366	12'	1,500	12	1,500	Lbs./Ft.
P3267	14'	2,000	12	2,000	Lbs./Ft.	P3367	14'	1,500	12	1,500	Lbs./Ft.
P3268	16'	2,000	12	2,000	Lbs./Ft.	P3368	16'	1,500	12	1,500	Lbs./Ft.
P3269	18'	2,000	12	2,000	Lbs./Ft.	P3369	18'	1,500	12	1,500	Lbs./Ft.
P3270	20'	2,000	12	2,000	Lbs./Ft.	P3370	20'	1,500	12	1,500	Lbs./Ft.

For product weight, see the Unistrut Engineering Catalog