

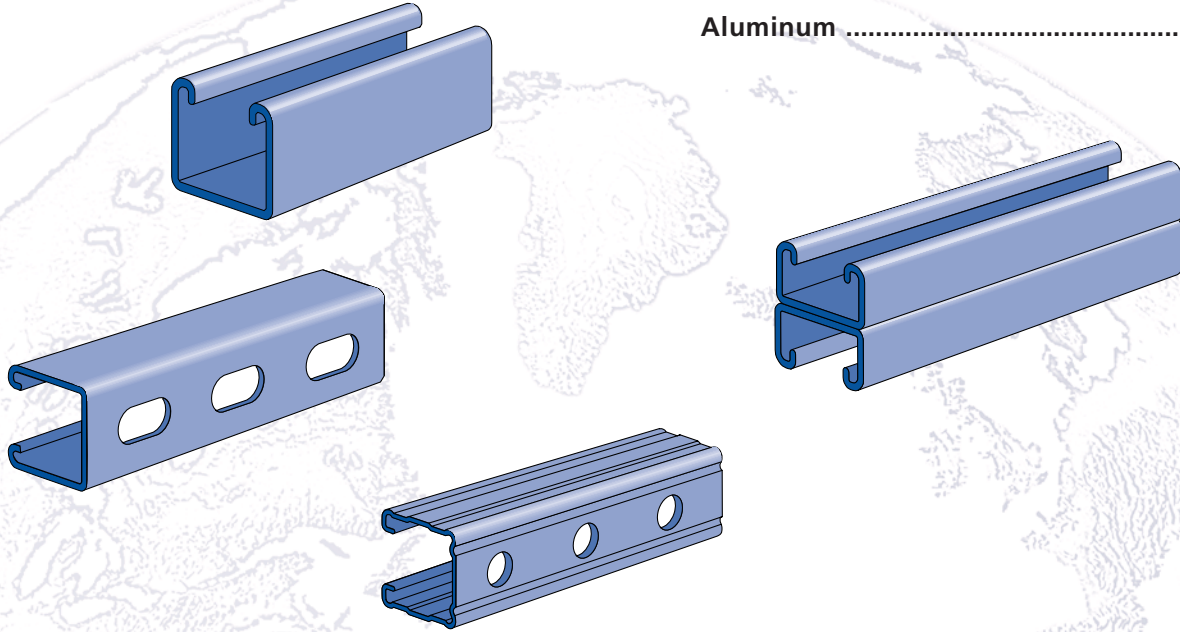


UNISTRUT

SPECIAL METALS

Stainless Steel 273-275

Aluminum 276-278



MATERIAL

Stainless Steel

Channels: ASTM A 240 (Type 304)

Sintered nuts: ASTM B783 (Type 316N2-33)

Fittings:

ASTM A240 (Type 304) or ASTM A276 (Type 304)

Type 316 stainless also available for most products.
Contact factory for specific material availability.

Aluminum

Channels (Extruded): ASTM B221 (Type 6063-T6)

Fittings: ASTM B209 (Type 1100F or Type 5052-H32)

Nuts: ASTM B221 (Type 6063-T5)

LOAD DATA (BEAM & COLUMN)

To determine maximum allowable beam and column loading for channels in this section, multiply the load data in the appropriate mild steel channel sections of this catalog by the following factors:

CHANNEL MATERIAL	BEAM LOAD % FACTOR	COLUMN LOAD % FACTOR
EXTRUDED ALUMINUM	33.0%	33.0%
STAINLESS STEEL	100.0%	100.0%

LOAD DATA (SLIP & PULL OUT)

Extruded Aluminum

To determine nut slip resistance, multiply load data for appropriate nut by 75%. To determine nut pull-out load, multiply load data for appropriate nut by 50%.

Stainless Steel

For design assistance, consult Unistrut customer engineering.

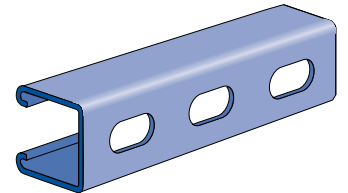
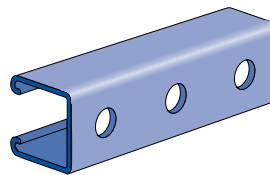
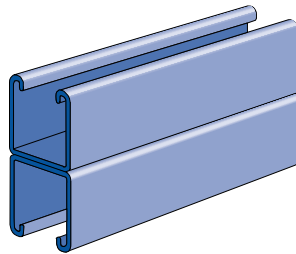
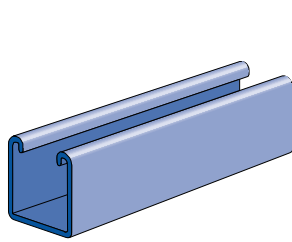
PRODUCT AVAILABILITY

Most fittings and channels shown in this catalog, are available in aluminum or stainless steel. Consult factory for ordering information.

DIMENSIONS

Imperial dimensions are illustrated in inches. Metric dimensions are shown in parenthesis or as noted. Unless noted, all metric dimensions are in millimeters and rounded to one decimal place.

P1000 Series



P1000 SS

Wt/100 Ft: 190 Lbs
(283 kg/100m)

P1001 SS

Wt/100 Ft: 380 Lbs
(566 kg/100m)

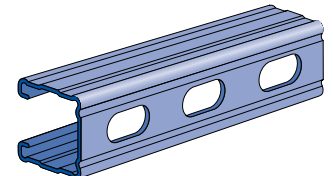
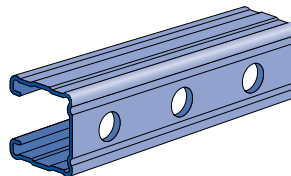
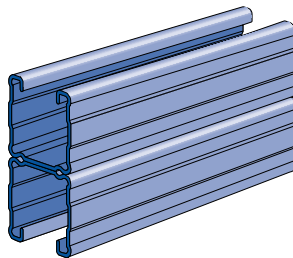
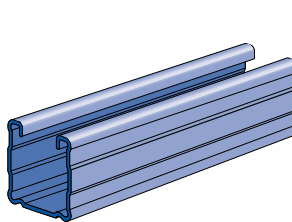
P1000HS SS

Wt/100 Ft: 185 Lbs
(275 kg/100m)

P1000T SS

Wt/100 Ft: 185 Lbs
(275 kg/100m)

P1100 Series



P1100 SS

Wt/100 Ft: 142 Lbs
(211 kg/100m)

P1101 SS

Wt/100 Ft: 284 Lbs
(422 kg/100m)

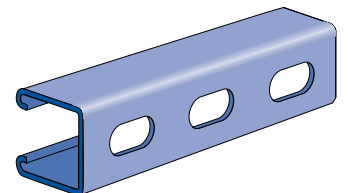
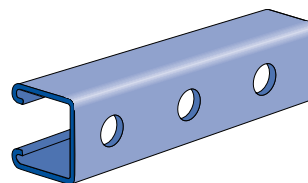
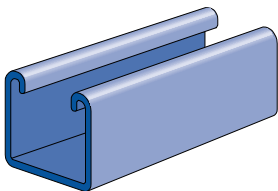
P1100HS SS

Wt/100 Ft: 136 Lbs
(202 kg/100m)

P1100T SS

Wt/100 Ft: 136 Lbs
(202 kg/100m)

P3000 Series



P3000 SS

Wt/100 Ft: 170 Lbs
(253 kg/100m)

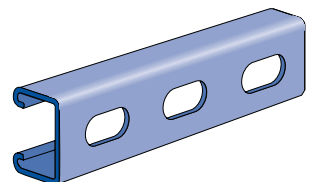
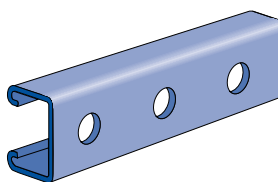
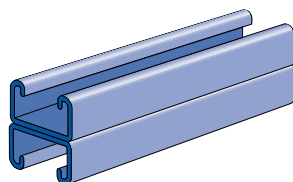
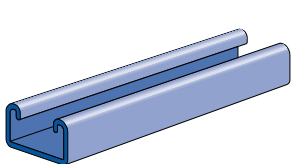
P3000HS SS

Wt/100 Ft: 165 Lbs
(112 kg/100m)

P3000T SS

Wt/100 Ft: 165 Lbs
(112 kg/100m)

P3300 Series



P3300 SS

Wt/100 Ft: 135 Lbs
(201 kg/100m)

P3301 SS

Wt/100 Ft: 270 Lbs
(402 kg/100m)

P3300HS SS

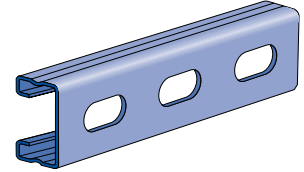
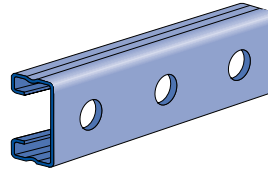
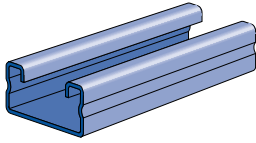
Wt/100 Ft: 130 Lbs
(193 kg/100m)

P3300T SS

Wt/100 Ft: 130 Lbs
(193 kg/100m)



P4000 Series



P4000 SS

Wt/100 Ft: 82 Lbs (122 kg/100m)

P4000HS SS

Wt/100 Ft: 79 Lbs (110 kg/100m)

P4000T SS

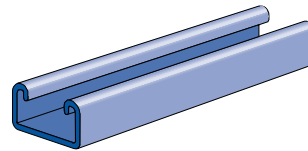
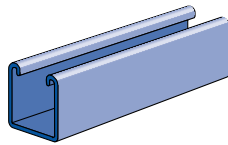
Wt/100 Ft: 79 Lbs (110 kg/100m)

P6000 SS

Wt/100 Ft: 37 Lbs (55 kg/100m)

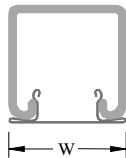
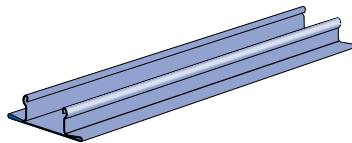
P7000 SS

Wt/100 Ft: 36 Lbs (54 kg/100m)



P1184 SS

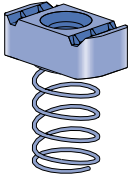
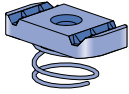
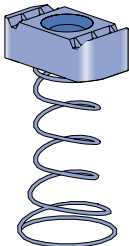
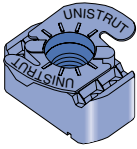
Closure Strip

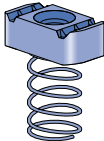
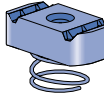
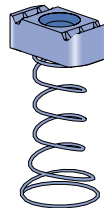


Part Number	Use With Channel	"W" In (mm)	Wt/100 Ft Lbs (kg/m)
P1184 SS	P1000		
	P1100	1 5/8	27
	P3300	41.3	40.2
	P4000		

Standard length 10 Ft.
Material: Stainless steel type 304.

1 5/8" Channel
Telestrut System
Nuts & Hardware
General Fittings
Pipe/Conduit Supports
Electrical Fittings
Concrete Inserts
1 1/4" Framing System
1 3/16" Framing System
Fiberglass System
Special Metals
PrimeAngle System
Product Index

	Channel nut Part number	Nut Size -Thread	Wt/100 pcs Lbs (kg)	For Use With 1 5/8" Channel		
				P1000, P1100, P2000, P3000	P3300, P4000 P4100	P5500
	P1006U-1420	1/4" -20	7 3.2	■	-	-
	P1008U	3/8" -16	10 4.5	■	-	-
	P1010U	1/2" -13	12 5.4	■	-	-
	Material: Sintered type 316 stainless steel with pre-galvanized spring.					
	P4006U-1420	1/4" -20	7 3.2	-	■	-
	P4008U	3/8" -16	9 4.1	-	■	-
	P4010U	1/2" -13	9 4.1	-	■	-
	Material: Sintered type 316 stainless steel with pre-galvanized spring.					
	P5506U-1420	1/4" -20	7 3.2	-	-	■
	P5508U	3/8" -16	10 4.5	-	-	■
	P5510U	1/2" -13	10 4.5	-	-	■
	Material: Sintered type 316 stainless steel with pre-galvanized spring.					
	P4006-1420T SS	1/4" -20	7 3.2	■	-	■
	P4008UT	1/2" -13	12 5.4	■	-	■
	P4010UT	1/2" -13	8 3.6	-	■	-

	Channel nut Part number	Nut Size -Thread	Wt/100 pcs Lbs (kg)	For Use With Channel		
				A1000	P3300, P4000 A4100	A5000
	A1006-1420 SS	1/4" -20	6 2.7	■	-	-
	A1008 SS	3/8" -16	6 2.7	■	-	-
	Material: Sintered type 304 stainless steel with pre-galvanized spring.					
	A4006-1420 SS	1/4" -20	5 2.3	-	■	-
	A4008 SS	3/8" -16	5 2.3	-	■	-
	Material: Sintered type 304 stainless steel with pre-galvanized spring.					
	A5506-1420 SS	1/4" -20	6 2.7	-	-	■
	A5508 SS	3/8" -16	6 2.7	-	-	■
	Material: Wrought type 304 stainless steel with pre-galvanized spring.					

Note
Most fittings, as shown in this catalog are available in stainless steel or aluminum. It is recommended that stainless steel channel nuts be used with aluminum channels.

1 5/8" Channel
Telesruct System
Nuts & Hardware
General Fittings
Pipe/Conduit Supports
Electrical Fittings
Concrete Inserts
1 1/2" Framing System
1 3/8" Framing System
Fiberglass System
Special Metals
PrimeAngle System
Product Index